



UNITÉ DE SOUTIEN
SSA | QUÉBEC

Ensemble pour un système de santé qui apprend



Activity Report

2022-2023



A word from Management

2022-2023 Priorities

Governance

The Unit in figures

Trajectory improvement projects

Pan-canadiens projects

Achievements

Coming soon

Must read and watch

Partners

Acknowledgements





As you read, move your mouse over the acronyms to see the full text.

A word from Management



A word from Management

The year 2022-2023 was an opportunity to dedicate ourselves entirely to helping the Québec healthcare system learn from its successes and mistakes.

First, we marked an important milestone by completing the field teams responsible for decentralizing our expertise in the four major University Health and Social Services Networks named Réseaux universitaires de santé et de services sociaux (RUISSS) in French. A mapping of experts, expertise and trainings in learning healthcare systems was also carried out to set up our star team.

Building on the experiential and scientific knowledge of its team, our Unit has demonstrated its ability to bridge the gap between science and practice in health and social services. In 2022, we were mandated by the Ministry of Health and Social Services to orchestrate continuous quality improvement (CQI) in Québec. It was in this context that the positions of provincial CQI coordinator, practice facilitator and regional CQI agents were created.



Catherine Wilhelmy

Patient partner
Scientific Co-management



Antoine Groulx

Scientific Co-management



Paul Nadeau

Patient partner
Administrative Services Co-management



Joe Guillaume Pelletier

General Co-management
Until December 2022



Rénaud Breton

Administrative Services Co-management
Since December 2022





Soulignons l'apport immense de **Joe Guillaume Pelletier** à l'avancement de nos travaux et à l'accomplissement de notre mission. Il a, notamment, assuré la délicate transition entre les deux phases de notre mandat. Merci et bon succès Joe Guillaume!



Nous avons accueilli **Régnald Breton** en tant que gestionnaire des services administratifs. Il a mené une carrière florissante en entreprise et dans le réseau de la santé et des services sociaux avant de se joindre à nous. Bienvenue!



A word from Management (2/2)

Because we co-construct knowledge and aim to see it applied, we have also launched the PATIENTS program. This program aims to improve targeted life trajectories by working in partnership, rather than evolving processes in silos. It is an innovative initiative, and we are determined to set a precedent.

In the same vein, we are now making a toolbox available on its website. It contains tools, trainings and opportunities for consultation, facilitation and networking. The achievements made available in the toolbox have been supported by our unit.

These are just a few examples of how far our team has come this year. We invite you to dive into this activity report, where you will be able to make discoveries and take part in shaping Québec's learning healthcare system.

Enjoy your reading!

Catherine Wilhelmy

Patient partner
Scientific Co-management



Antoine Groulx

Scientific Co-management



Paul Nadeau

Patient partner
Administrative Services Co-management



Joe Guillaume Pelletier

General Co-management
Until December 2022



Rénauld Breton

Administrative Services Co-management
Since December 2022





Soulignons l'apport immense de **Joe Guillaume Pelletier** à l'avancement de nos travaux et à l'accomplissement de notre mission. Il a, notamment, assuré la délicate transition entre les deux phases de notre mandat. Merci et bon succès Joe Guillaume!



Nous avons accueilli **Régnald Breton** en tant que gestionnaire des services administratifs. Il a mené une carrière florissante en entreprise et dans le réseau de la santé et des services sociaux avant de se joindre à nous. Bienvenue!



Priorities

2022-2023



2022-2023 Priorities



Activation of the field teams (SSA-RUISSS teams)



Support for equity, diversity and inclusion



Launch of the PATIenTS program



Promoting partnership with political decision-makers



Launch of the Young Leaders in a Learning Health System Program



Improving the performance measurement process



LHS: Learning health system



SSA or LHS: Système de santé apprenant /
Learning health system

RUISSS: Réseaux universitaires de santé et
de services sociaux / University Health and
Social Services Networks

The SSA-RUISSS teams decentralize the
Unit's expertise, acting as offshoots of its
scientific axes in the field.



PATienTS: Partenariats d'Amélioration de Trajectoires de vie et d'Innovation en Transition vers la Santé durable / Life Trajectory Improvement and Innovation Partnerships in Transition to Sustainable Health



Governance



Governance

Highlights of 2022-2023

- Review of the Unit's management structure
 - Abolition of the position of General Manager and creation of the position of Administrative Manager
- Accounting for 2021-2022
- Development and implementation of a new project-based budget tracking tool
- Budget planning for 2021-2026
- Drafting of an annual financial report (new model)
- Organization of an internal strategy day
- Implementation of an annual planning calendar
- Development of a schedule of recurring executive team deliverables
- Revising certain processes and procedures (e.g. expense reports)
- Priority-based planning of the 2023-2024 project portfolio
- Establishment of a consultation process on priorities and launch of a call for interest
- Development of the structure and co-construction of the PATIenTS program



PATIENTS: Partenariats d'Amélioration de Trajectoires de vie et d'Innovation en Transition vers la Santé durable / Life Trajectory Improvement and Innovation Partnerships in Transition to Sustainable Health



The Unit in figures

April 1, 2022 to March 31, 2023



The team

As of March 31, 2023

18

Patient partners

3

Members of the CQI and
facilitation team

115

Members of the patient
partners community
hub *Experiences*

12

Board members

30

Scientists

15

Coordination managers
and executive team
members

42

Fellowship cohort
members

66

Members of the
Management Assembly



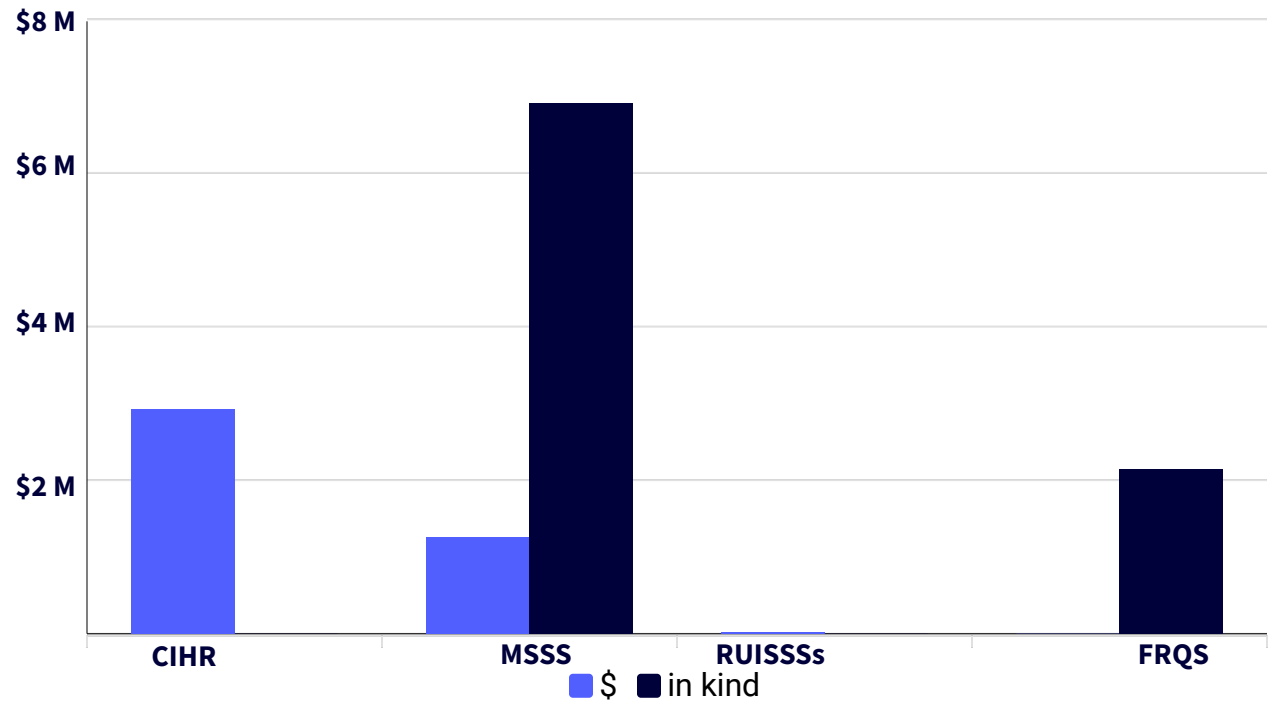
CQI: Continuous quality improvement

\$13, 223, 992

in cash and in kind

Budget

2022-2023





MSSS:

Ministère de la Santé et des Services sociaux du Québec /
Québec's Ministry of Health and Social Services



FRQS: Fonds de recherche du Québec — Santé /
Québec's Health Research Fund



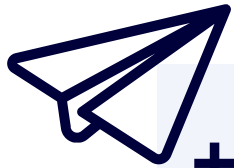
RUISSS: Réseaux universitaires de santé et de services sociaux / University Health and Social Services Networks



CIHR: Canadian Institutes of Health Research

Online

2022-2023



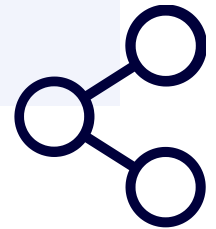
+316 newsletter subscribers



+21 234 video viewings



+20 647 unique visitors on the website



+949 social media followers



Follow us!



Support requests

2022-2023



95

+



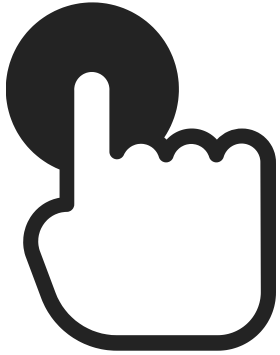
10



13



28



In 2022-2023, the Unit received 95 requests for support. The customer profile is changing.

- Researchers remain in greater numbers
- Growing interest from the field

LHS Portal

The Unit's portal allows teams to apply for support online.

To carry out projects

- In partnership
- That take into account the evidence emanating from science
- To support the healthcare system in becoming a learner





21



23



Trajectory improvement projects

Targeted grants



Targeted grants

Trajectory improvement program in Québec's four RUISSs

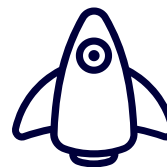
We united partners and facilitated the pooling of the strengths and expertise of the Québec health and social services network in line with the MSSS priorities.




Ongoing Programs

The Unit continued to participate in targeted grants in partnership with the Ministry of Health and Social Services and the FRQS.

- **Major Neurocognitive Disorder** 
- **Local care and services** 



Launch

In partnership with the RUISSs, the Unit launched the PATIenTS program, aimed at improving a trajectory in each of Québec's RUISSs. 



POR in support of clinical and organizational transformations in local care and services

1 program and 5 projects

- Concrete benefits in terms of mobilizing patients
- **The F2PL project** (training front-line trainers) has illustrated a new role for patient partners.

Unique! These people have been trained as clinical trainers in over 13 clinical settings:

- Social workers
- Nurse clinicians
- Patient partners



FRQS: Fonds de recherche du Québec — Santé /
Québec's Health Research Fund



MSSS:

Ministère de la Santé et des Services sociaux /
Québec's Ministry of Health and Social
Services



RUISSS: Réseaux universitaires de santé et de services sociaux / University Health and Social Services Networks

PATIENTS: Partenariats d'Amélioration de Trajectoires de vie et d'Innovation en Transition vers la Santé durable / Life Trajectory Improvement and Innovation Partnerships in Transition to Sustainable Health



RUISSS: Réseaux universitaires de santé et de services sociaux / University Health and Social Services Networks



Major Neurocognitive Disorder living lab

We continued our targeted subsidy program aimed at facilitating the transitions and journeys of people living with Major Neurocognitive Disorder and their families.





Programme PATIenTS
Partenariats d'Amélioration de
Trajectoires de vie et d'Innovation en
Transition vers la Santé durable

PATIenTS Program

4 tangible projects to improve life trajectories in Québec

We have co-constructed this program with our field teams, RUISSs and healthcare establishments to meet the needs of the community.



2023



2024



2025+



Programme PATlenTS
Partenariats d'Amélioration de
Trajectoires de vie et d'Innovation en
Transition vers la Santé durable

2024

- Implement continuous improvement loops and measure impact
- Diffuse, replicate or scale up these PATlenTS projects



Programme PATienTS
Partenariats d'Amélioration de
Trajectoires de vie et d'Innovation en
Transition vers la Santé durable

2025+

- Creating excitement about improving life trajectories from a learning healthcare system (LHS) perspective



SSA or LHS: Système de santé apprenant /
Learning health system

RUISSS: Réseaux universitaires de santé et
de services sociaux / University Health and
Social Services Networks

The SSA-RUISSS teams decentralize the
Unit's expertise, acting as offshoots of its
scientific axes in the field.



PATienTS: Partenariats d'Amélioration de
Trajectoires de vie et d'Innovation en Transition vers
la Santé durable / Life Trajectory Improvement and
Innovation Partnerships in Transition to Sustainable
Health



As of March 31, 2023

- Teams almost complete
- Trajectories to be improved identified (1/RUISSS)
- Work plans submitted

See the 4 projects in detail

RUISSS McGill



RUISSS
Université de Montréal



Programme PATienTS
Partenariats d'Amélioration de
Trajectoires de vie et d'Innovation en
Transition vers la Santé durable

RUISSS
UNIVERSITÉ DE
SHERBROOKE



RUISSSUL
RÉSEAU UNIVERSITAIRE INTÉGRÉ DE SANTÉ
ET DE SERVICES SOCIAUX DE L'UNIVERSITÉ LAVAL
ALLIÉS POUR LA SANTÉ DURABLE





Pan-canadiens projects

2022-2023

Pan-canadiens projects



We worked closely with SPOR units and networks to share experience, expertise and best practices, and to support projects aimed at improving clinical and organizational practices.



Other SPOR funded entities



SPOR Communities of Practice





New collaborations

We contacted every researcher in Québec who had received an SPOR-related grant and who was not in our network of collaborators, to explore the possibility of working with the Unit.



Saskatchewan SPOR unit

We carried out a knowledge transfer to the Saskatchewan Unit (SCPOR) in a project using the Delphi methodology:

- Technical aspects
- Advantages of the method
- Creation of a panel
- Consensus
- Integrating suggestions and closing the panel



With the **SPOR Evidence Alliance**, we have

- Co-constructed a process that defines how to collaborate depending on the type of request and the requester.
- Made a team to carry out a literature review as part of the PATientTS project of the SSA-RUISSS Université de Sherbrooke team.



We collaborated with the **Chronic Pain Network**:

- Update of the Understandingresearch.ca website
- Discussion on a PROMs project



Our unit collaborates with other SPOR units by participating in various communities of practice:

- Communication
- Learning health systems
- Patient engagement
- Measurement indicators
- Capacity building
- SPOR Support Units Council



BC SUPPORT Unit
Advancing Patient-Oriented Research

British Columbia SPOR Unit

We collaborated with the **British Columbia Unit** to adapt the interactive roadmap for patient and public engagement in health research into French.





Newfoundland and Labrador SPOR unit



We have begun collaborating with the Newfoundland-Labrador Unit on a clinician experience project.

The protocol for a qualitative study of doctors and nurses in Newfoundland and Labrador is currently being prepared.





We co-developed these projects with SPOR units and other entities:

- Environmental scan on patient-oriented research trainings and tools 
- Mapping of the SPOR ecosystem
- Patient engagement assessment framework 



We have collaborated with **Diabetes Action Canada** and the **Canadian Primary Care Research Network**, and are in discussions for the ***Communiquer clairement*** project.



With the **CHILD-BRIGHT network**, we have developed indicators of the involvement of patients, clinicians, decision-makers and researchers in research projects. We are a member of the network's Knowledge Mobilization Committee.



Achievements

2022-2023

Achievements

2022-2023



Consultation



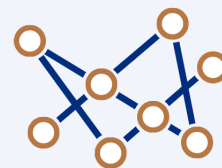
Tools



Facilitation



Training



Networking



Achievements

Tools

Patient engagement assessment | evaluation framework +

TorSaDE data cohort | toolbox +

Communities of practice | guide +

Understanding research | website +

Research grant application | EDI/Sex and gender guide +

Assessing the potential for scaling up innovations | ISSaQ questionnaire +

Partnership in an LHS | interactive roadmap +

Partner portal | database +

Inclusive practices with socially excluded people | guide and update of the ENGAGE+ website +

PREMs/PROMs | toolbox +

Participatory research | ENGAGE+ platform +

Mood disorders | study of trajectories and costs +



Trajectoire Santé – Données Enrichies



TorSaDE data cohort

A toolbox for analyzing the Torsade cohort has been updated.

- A TorSaDE research community is deployed
 - 13 teams, 22 students and 7 institutions are involved
- 14 new access requests





Inclusive practices with socially excluded people

This guide looks at how research teams can work in partnership with people experiencing social exclusion.

- 1 guide
- 4 podcasts
- 1 presentation in Vancouver



The ENGAGE+ website has also been updated. Visit it to discover visual participatory research methods.



ENGAGE+ website

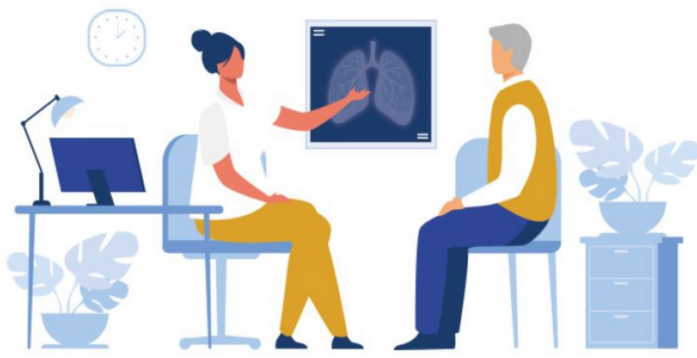
The **ENGAGE+** digital platform has been enhanced to promote equity and inclusion in research.

Co-constructed by community organizations and the canadian and international research communities, the bilingual ENGAGE website offers participatory methods and visual and auditory tools.



PREMs/PROMs toolbox

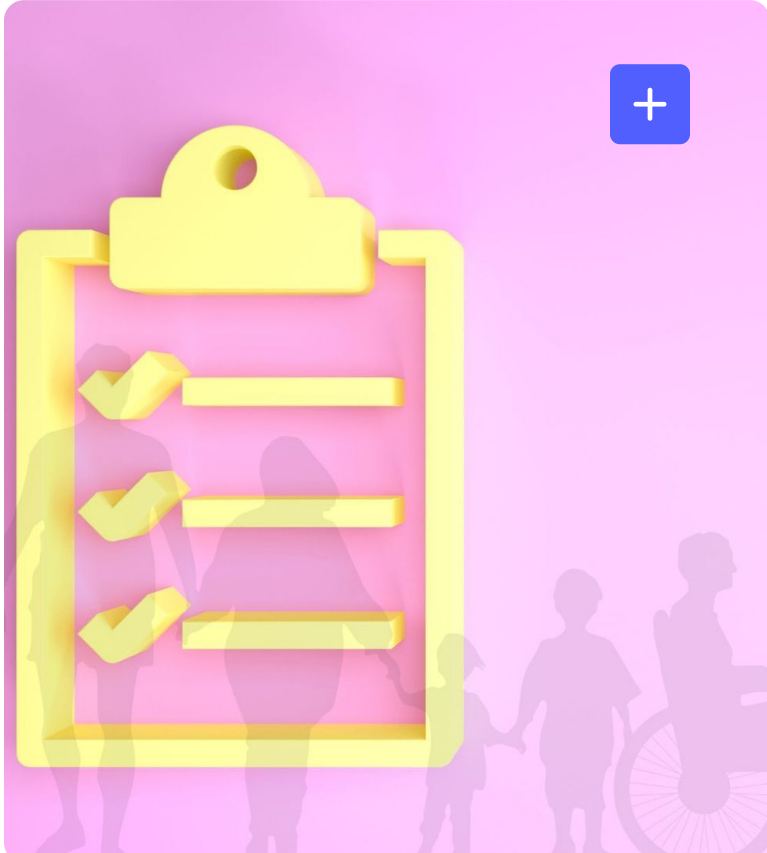
We supported an environmental scanning project, and then the development of a toolbox for patient self-reported experiential and outcome measures.



Content of the toolbox

- PREMs, PROMS or not?
- PROMs and PREMs : Why are they a key to improving health care and services ?
- Possible barriers to the integration of PROMs and PREMs and the means to put in place to overcome them
- Relevant general documentation
- Recommendations



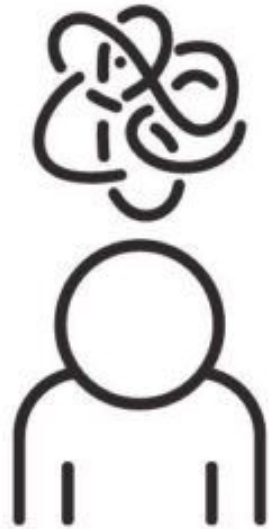


Research grant applications: Sensitive Approach to Equity, Diversity, and Inclusion (EDI) in Research

We have created a guide to help research teams apply for grants.



Mood disorders: trajectories and costs



Evaluating care trajectories enables us to observe users' contacts with the healthcare system and their use of healthcare services.

We conducted a study to apply methods for identifying typical care trajectories for people living with mood disorders, and to compare the results of these methods with each other.

We evaluated the costs of these trajectories according to the methods used.



Assessing patient engagement

Learning together: an evaluation framework

We supported the creation of this tool, which was co-developed with all provincial SPOR units and other SPOR entities. **Learning Together** is a framework for evaluating patient and public engagement in research.

It is a national tool that can be used to plan and evaluate the engagement process before, during and at the end of a project.



- A guide to planning the patient engagement process
- A list of indicators
- A tool to catalyze best practices and common strategies



Understanding Research website

The Understanding Research site aims to demystify the basic concepts of research. Videos, glossary and guide are available.

- Updated website
- 642 viewings





Partner Portal

Developed by **CEPPP** in collaboration with the **Canada Research Chair in Patient and Community Partnerships** and our **Unité de soutien SSA Québec**, the partner portal is designed to facilitate the recruitment of patient partners, as well as the study of partnership practices.

Deployment / scaling up

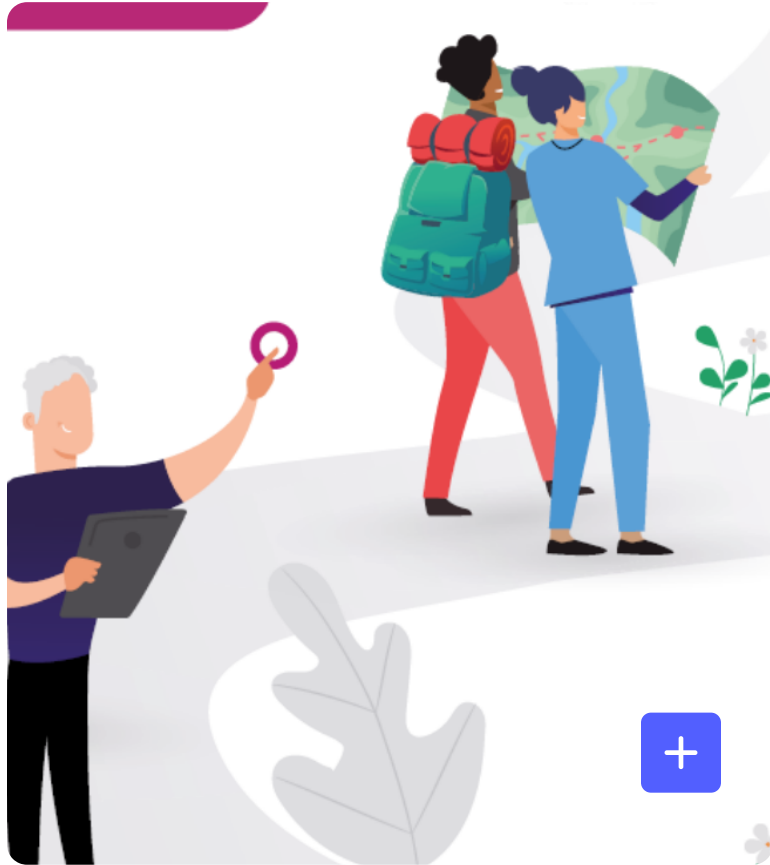
The portal is currently undergoing beta testing with a team from Université de Laval. The portal should be deployed in all 4 RUISSS soon.



Communities of Practice Guide

This document outlines the main points to consider before and during the implementation of a community of practice.
Available in French only

- Definitions
- Steps and processes
- Success factors



Roadmap for partnering

The purpose of this tool is to explain the roles of users and their families in a LHS and to describe how these people can, individually and collectively, contribute to its many dimensions.

- Co-constructing an interactive roadmap
 - Roles
 - Winning conditions for a successful partnership
 - Challenges
- Creating a training course



ISSaQ

The ISSaQ (Innovation Scalability Self-administered Questionnaire) tool assesses the scaling potential of innovations.

The tool has been presented at several scientific knowledge dissemination events and has been used in a real-life context for two knowledge transfer research projects.





Achievements

Training and mentoring

Mentoring

Cohort of Fellows 

LHS Young Leading Researchers 

Synchronous training courses

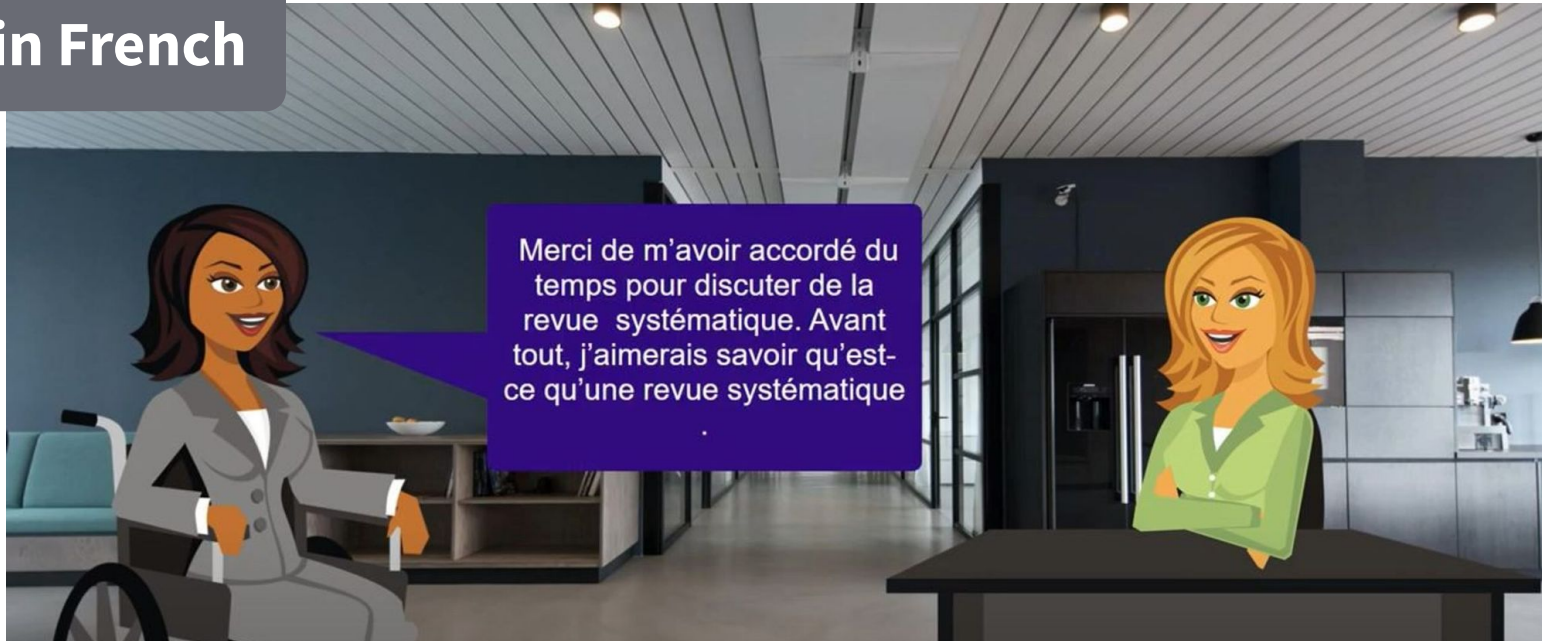
Training in patient partnership 

Asynchronous training courses

Training on involving patient partners in a systematic literature review process 

ENGAGE podcast series on participatory research 

in French



Merci de m'avoir accordé du temps pour discuter de la revue systématique. Avant tout, j'aimerais savoir qu'est-ce qu'une revue systématique

Training

Introduction to the stages of a systematic review and involvement of patient partners

- What is the purpose of a systematic review?
- What are the steps involved?
- How can patients contribute?





Program for scholarship holders

One cohort each year receives support from our unit as part of the complementary training and capacity-building program for FRQ fellows on patient-oriented research, the learning healthcare system, care trajectories and the quintuple aim, in partnership with Québec's three research funds.

Fellowships offered in partnership with the unit enable grant recipients to hone their skills, enhance their career trajectory, network and work across disciplines.

2022-2023

- 2 scientific events (networking and co-modality)
- Monthly newsletter
- Webinars
- Scholarships
- Personalized coaching packages





Young Learning Health Systems Leaders

Thanks to a partnership between the Fonds de recherche du Québec (FRQ), the Unité de soutien SSA Québec and the Réseau universitaire de santé et des services sociaux (RUISSSSs), 5 career scholarships were offered to young LHS leaders across Québec.

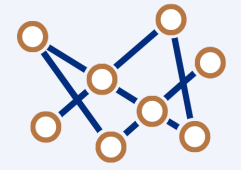
- A vision of continuous improvement for the Québec healthcare system
- Development of explicit, committed leadership
- Promoting a culture of change





Achievements

Consultation, facilitation and networking



- Consultations on ethical issues** +
- Indigenous patient circle** +
- Patient partnership events** +
- Continuous Quality Improvement mandate** +
- Clinician reported expertise measures: a new expertise** +
- Transparency and consent portal** +
- Québec: a learning city** +
- Table of the University Health and Social Services Networks** +



Indigenous circles

The indigenous circle deployed last year has evolved. Two circles are now in operation to foster active collaboration between Indigenous people, researchers, healthcare providers and system decision-makers.

- Advisory circle
- Indigenous Patient Partners circle

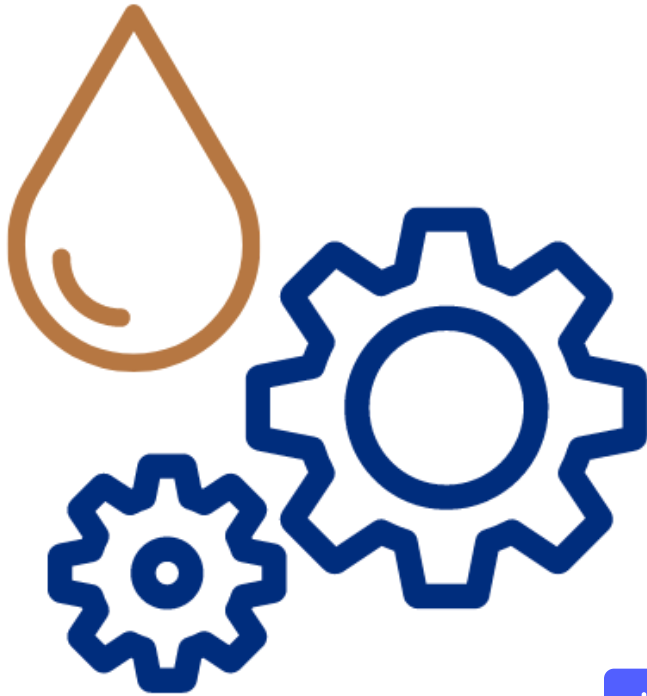




Table of the RUISSSs



The Partnership Axis leads the monthly meetings of the table that gathers the University Health and Social Services Networks (RUISSSs), a community of practice bringing together the 4 antennas and the Partnership Axis.



Continuous Quality Improvement

We have obtained a **ministerial mandate** to support continuous quality improvement (CQI) in proximity services for Québec.

- Writing of a position paper on CQI
- Development of a reflective structure and consolidation of human resources in CQI
 - Provincial CQI coordinator
 - Practice facilitator
 - Regional CQI agents
- Facilitation of the activation of the COMPAS+ reflective initiative in collaboration with the Institut National d'Excellence en santé et en service sociaux (INESSS) and the Ministère de la Santé et des Services sociaux (MSSS)



Québec: a learning city

Québec City has demonstrated its firm desire to evolve in line with the learning cities model, particularly with regard to sustainable health. The Unit's Scientific Director, **Antoine Groulx**, will contribute to achieving this objective.





CREMs: a new expertise

A team has been formed to develop the new CREMs (Clinician Reported Experience Measures) expertise. The aim of the project is to develop indicators for measuring the well-being of health human resources so that we can measure our impact on this aspect of the quintuple aim with data.

- Development of a work plan
- Inventory of CREMs tools
- Prioritization of human resources needs for the evaluation of their experience



Consultations on ethical issues

We have begun consulting patients, professionals and decision-makers to identify the challenges of ethical assessments in participatory and evolutionary research projects such as living laboratories and projects to improve care and service trajectories.


Why?

These consultations will enable us to make recommendations to facilitate the ethical process for certain projects, while taking into account the importance of this process.



Transparency and consent portal

We helped define and validate the parameters required to set up a Québec transparency and consent portal.

- Participation of the Unit's scientific co-director in parliamentary committee hearings on **Bill 3** 
- Meetings with the MSSS's information technology directorate to assess the feasibility of including a transitional consent portal while awaiting the health portal and digital health record.



**ASSEMBLÉE NATIONALE
DU QUÉBEC**

Notre codirection scientifique/patient partenaire s'est positionnée sur l'importance de l'accès aux données pour la recherche et l'amélioration continue des pratiques en **commission parlementaire**.

L'Unité a pu démontrer l'importance de ce projet de loi au-delà de la sphère politique en rendant les impacts de l'accès aux données concrètes pour la population.



Patient engagement

We have continued our efforts to develop the expertise of our patient partners.

- Event *Le partenariat dans tous ses états* [+](#)
- Annual meeting of the unit's Indigenous Patient Partner Circles [+](#)
- National and international tour of patient partners community *Expériences*
- Release of 3 issues of *Expériences* magazine [+](#)





Coming soon
2023-2024



Coming soon

2023-2024



Position statement on CQI

Mandated by the provincial Ministry of Health and Social Services to orchestrate continuous quality improvement, the Unit will carry out a review of knowledge and recommendations.



LHS Living map

The Unit's project is to deploy an evolving map of experts, expertise and training courses in learning healthcare systems in Québec.



PATlenTS Program - phase 2

The Unit will continue with the four PATlenTS projects, carrying out a second cycle of improvement, impact measurement and a scale-up plan.



PADA

The Unit will support the creation of a collaborative platform that will enable people to create decision-support tools for health and social services.



LHS capability assessment

The questionnaire for assessing the readiness of family medicine groups to become learners will soon be deployed. It will help identify clinics that are ready to become learners.



Partnership provincial directory

The Unit will lead the creation of a common, accessible and iterative directory of partnership infrastructures / expertise hubs / partnership groups / communities in Québec.



CQI: Continuous Quality Improvement



PATIENTS: Partenariats d'Amélioration de
Trajectoires de vie et d'Innovation en
Transition vers la Santé durable / Life
Trajectory Improvement and Innovation
Partnerships in Transition to Sustainable
Health



LHS: Learning Health System



LHS: Learning Health System



New contents

2022-2023

Multimedia content

2023-2024



in French



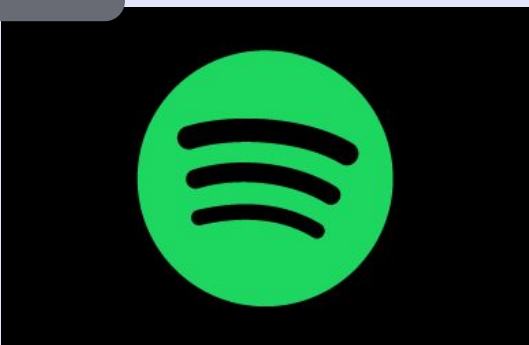
▶ Real-life case of a learning healthcare system: step by step

in French



▶ Antoine Groulx receives the Sustainable Health Award

in French



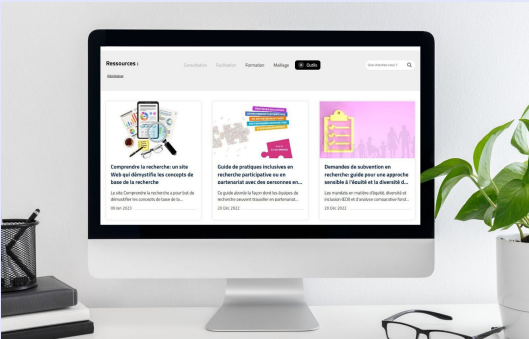
▶ Launch of the unit's Spotify channel



◉ What is a living lab?



◉ What is continuous quality improvement?



+ LHS Toolbox: filter by expertise or type



Founding partners



Partners

Thanks also to all our collaborators 



Instituts de recherche en santé du Canada / Canadian Institutes of Health Research



Thank you!

Our warmest thanks to our team members. These people are dedicated to helping the healthcare system learn from its successes and mistakes. They develop knowledge and facilitate its use. The fruits of research should not be shelved!





Axes

- Partenariat
- Renforcement des capacités
- Gestion des données
- Valorisation des données
- Gestion de changement

Équipes SSA-RUISSS

- Université Laval
- Université McGill
- Université de Montréal
- Université de Sherbrooke

- Équipe exécutive
- Comités coordination, directeur et scientifique
- Assemblée de gestion
- Communauté de patient(e)s partenaires
Expériences et cercles autochtones
- Directions administrative et scientifique

[+ INFO](#)



Scientific axes

- Partnership Axis
- Data Management Axis
- Data to Knowledge Axis
- Change Management Axis
- Capacity Building Axis

SSA-RUISSS field teams

- Université Laval
- McGill University
- Université de Montréal
- Université de Sherbrooke

- Executive team
- Coordination, steering and scientific committees
- Management assembly
- Expériences Patient partners community and indigenous circles
- Administrative and scientific management

